

Direct drive gear pump-motor units DGD series

The DGD direct drive gear pumps have a housing is Vectra and a variety of elastomers for the widest chemical compatibility. Built to handle clean water and relatively viscous fluids at low pressure, the DGD series pump-motor unit has low pulsation and is capable of handling fluids at a maximum temperature of 70 °C (158 F). The extreme compactness of its design makes it the preferred choice where space is limited. Suction/discharge ports are 8 mm barbed end or with a 6 mm quick connector.

Motor version (brush type):

- 1500 rpm, 24 V DC
- 3400 rpm, 24 V DC
- 3900 rpm, 24 V DC



MAIN APPLICATIONS

- Water purification
- Spraying
- Condensation removal
- Syrup dispensing
- Vending machines
- Food processing
- Digital macro printing
- Sanitization



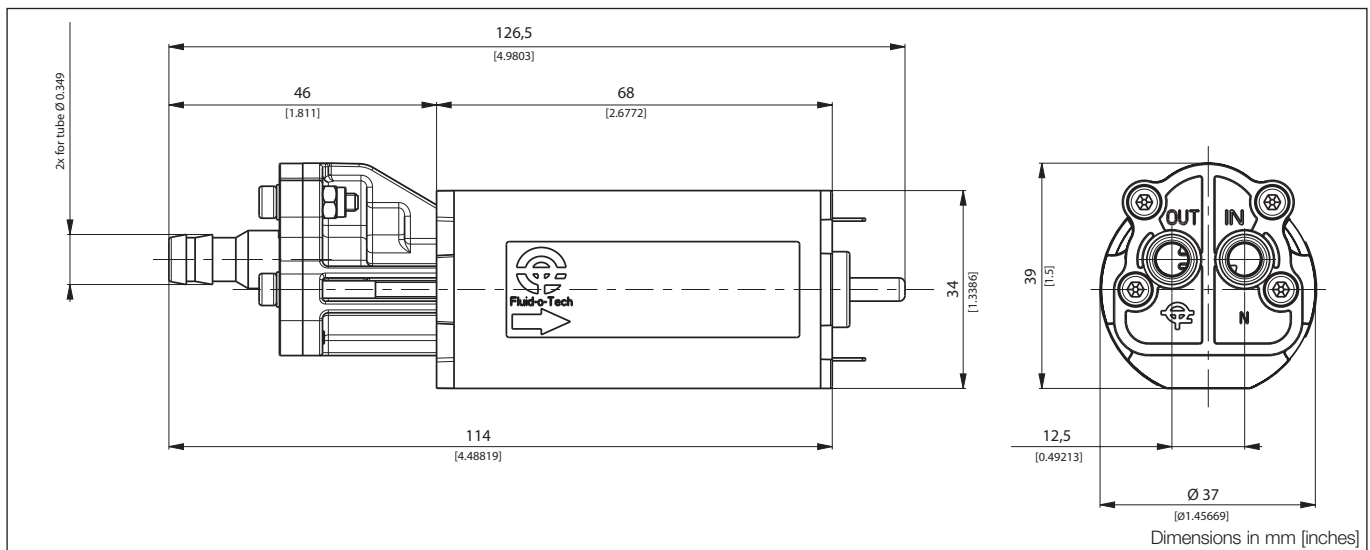
MODEL NUMBER MATRIX

Position	1	2	3	4	5	Customiz.
Code	DGD	09	N	AA	A01	0000

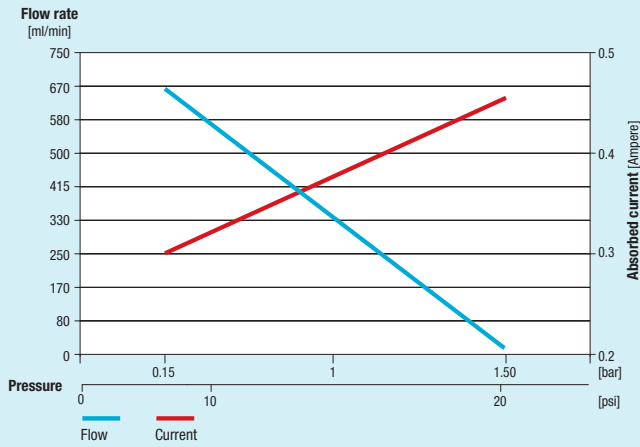
POS DESCRIPTION

CODE

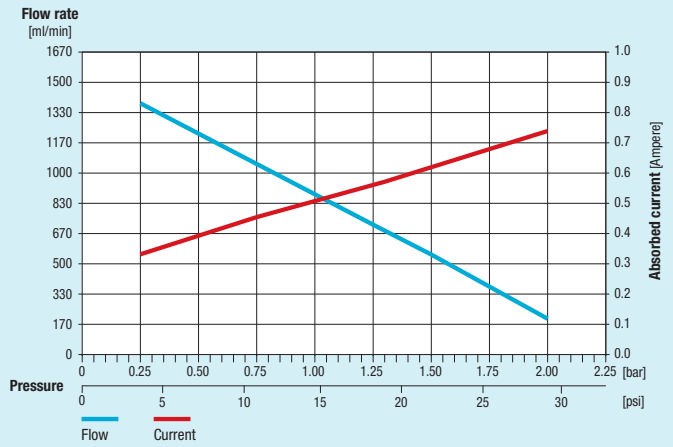
1	Pump series	DGD = direct drive
2	Gears width	04 = 4 mm 09 = 9 mm
3	Elastomer material	N = NBR V = VITON® E = EPDM
4	Front and rear housing	AA = Fitting for Ø7 pipe (VECTRA + VECTRA) BA = Fitting for Ø7 pipe (VECTRA + AISI 316L)
5	Motor speed	A01 = 1500 rpm A02 = 3400 rpm A03 = 3900 rpm



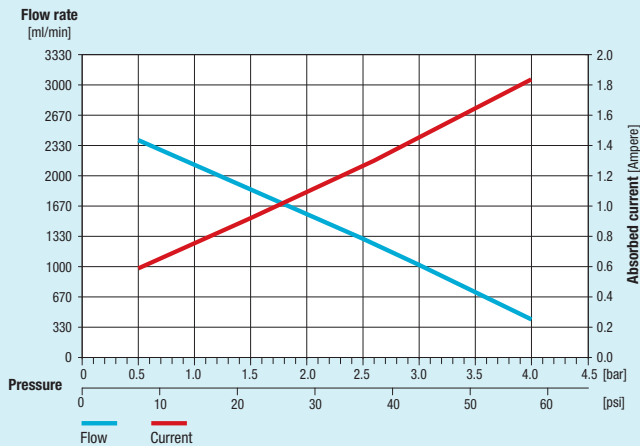
DGD04 @ 1500 rpm



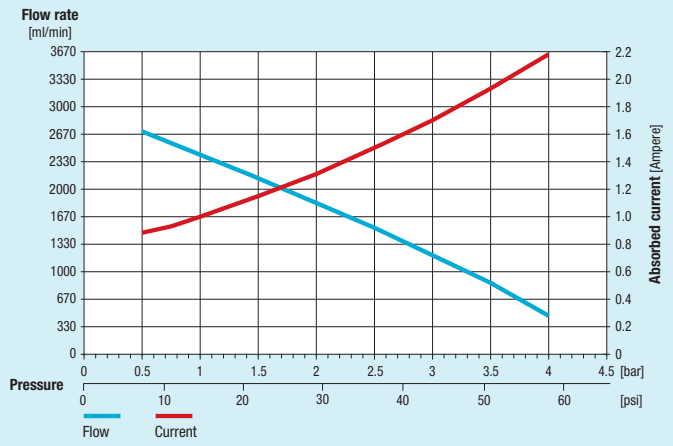
DGD09 @ 1500 rpm



DGD09 @ 3400 rpm



DGD09 @ 3900 rpm



Maximum inlet pressure ± 0.5 barg

Note: Characteristics with water at 20 °C (68 F) and without relief valve. Fluids different from water must be validated by the Customer. Temperature requirements different from ambient temperature must be mentioned on the order. Different materials are available upon request. Use a filter before the pump inlet no larger than 10 micron